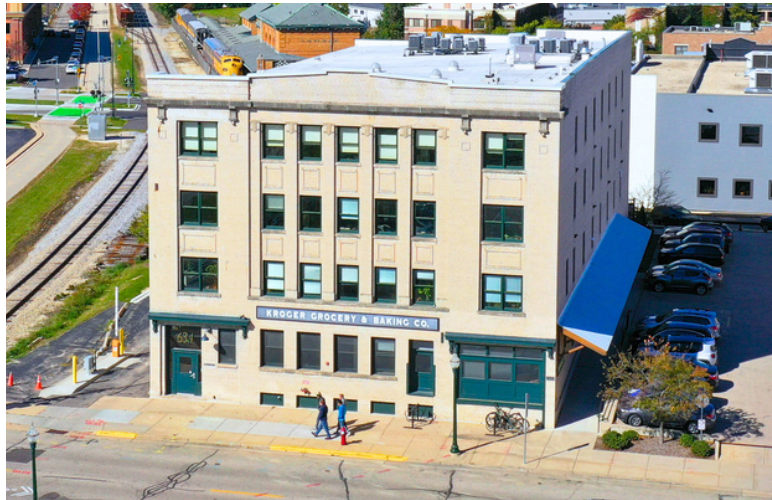
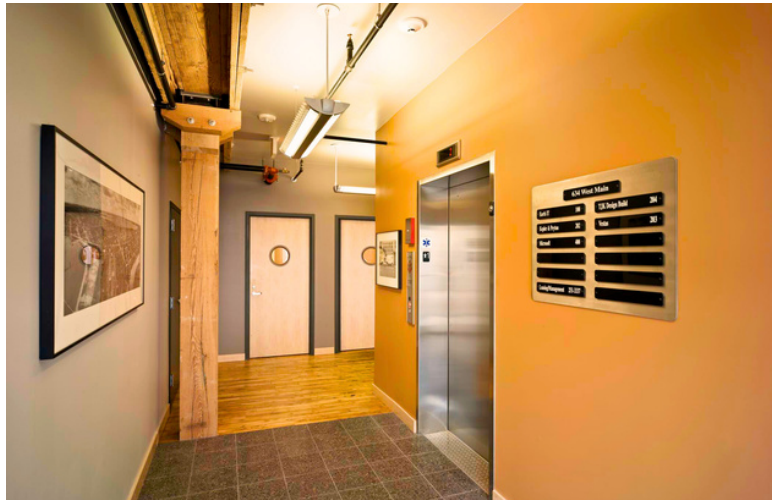
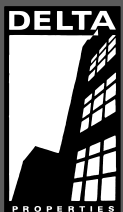


# SUITE 200

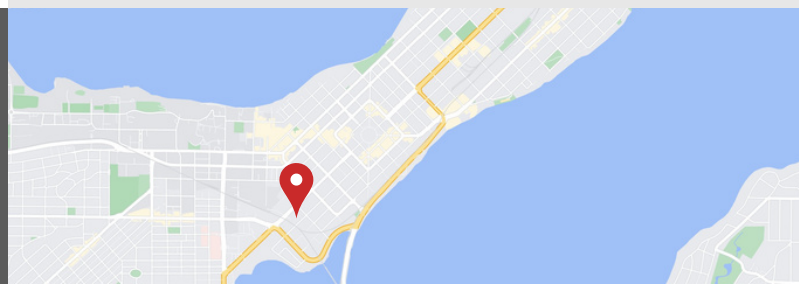
634 W MAIN STREET MADISON, WI 53703



- AVAILABLE: 5/1/24**  
**SIZE : 2,244 SF**
- 3 LARGE PRIVATE OFFICES
  - 1 CONFERENCE ROOM
  - OPEN WORK AREA
  - KITCHEN AREA
  - EXPOSED BRICK, WOOD BEAMS & ABUNDANT NATURAL LIGHTING
  - OPERABLE WINDOWS
  - ENERGY EFFICIENT LIGHT FIXTURES
  - HIGH EFFICIENCY HVAC & MERV13 AIR FILTERS
  - SHOWER FACILITIES
  - ADA ACCESSIBLE
  - AMPLE SURFACE PARKING
  - IMMEDIATE BIKE PATH ACCESS
  - OUTDOOR PATIO
  - CLOSE PROXIMITY TO CAPITOL SQUARE AND KOHL CENTER

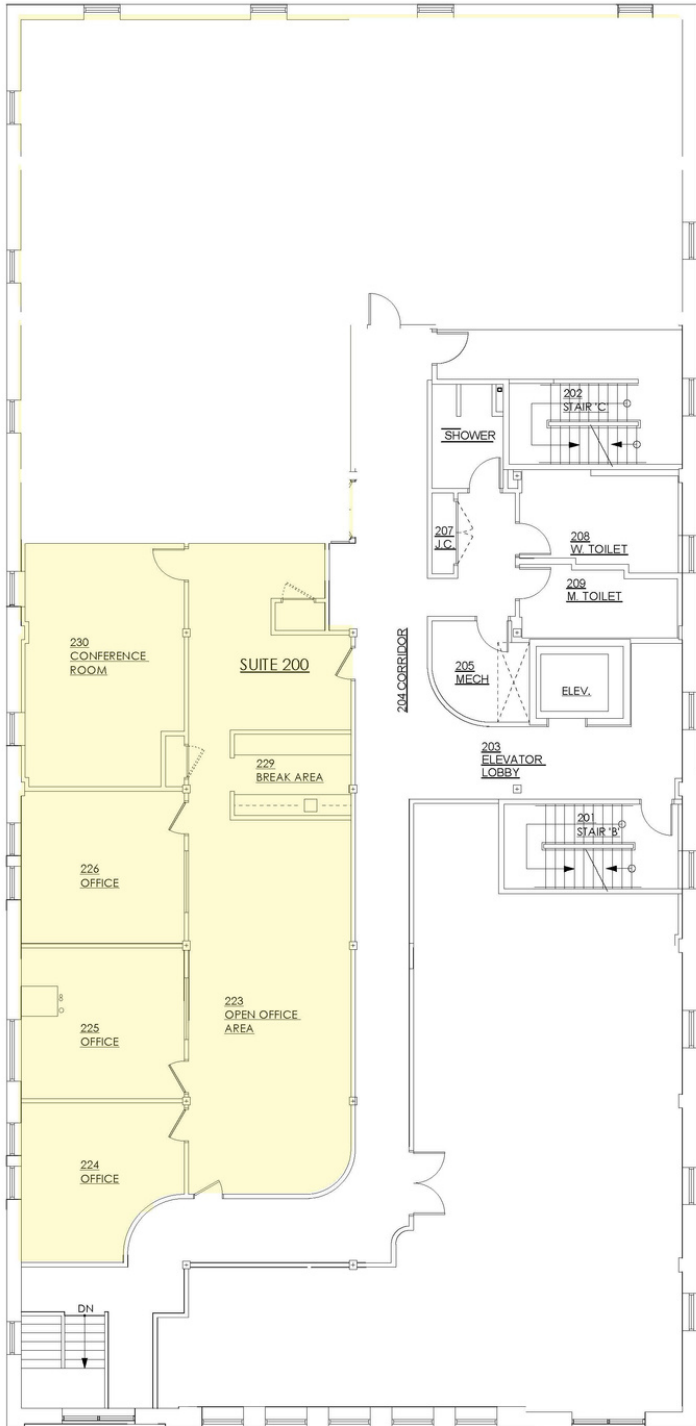


(608)251-3337  
JUDY@DELTA-PROPERTIES.COM  
WWW.DELTA-PROPERTIES.COM

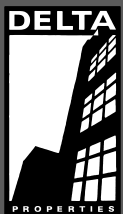


# SUITE 200

634 W MAIN STREET MADISON, WI 53703



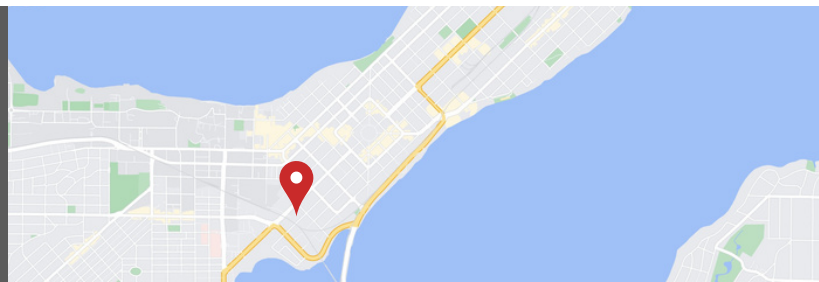
EXISTING FLOOR PLAN



(608)251-3337

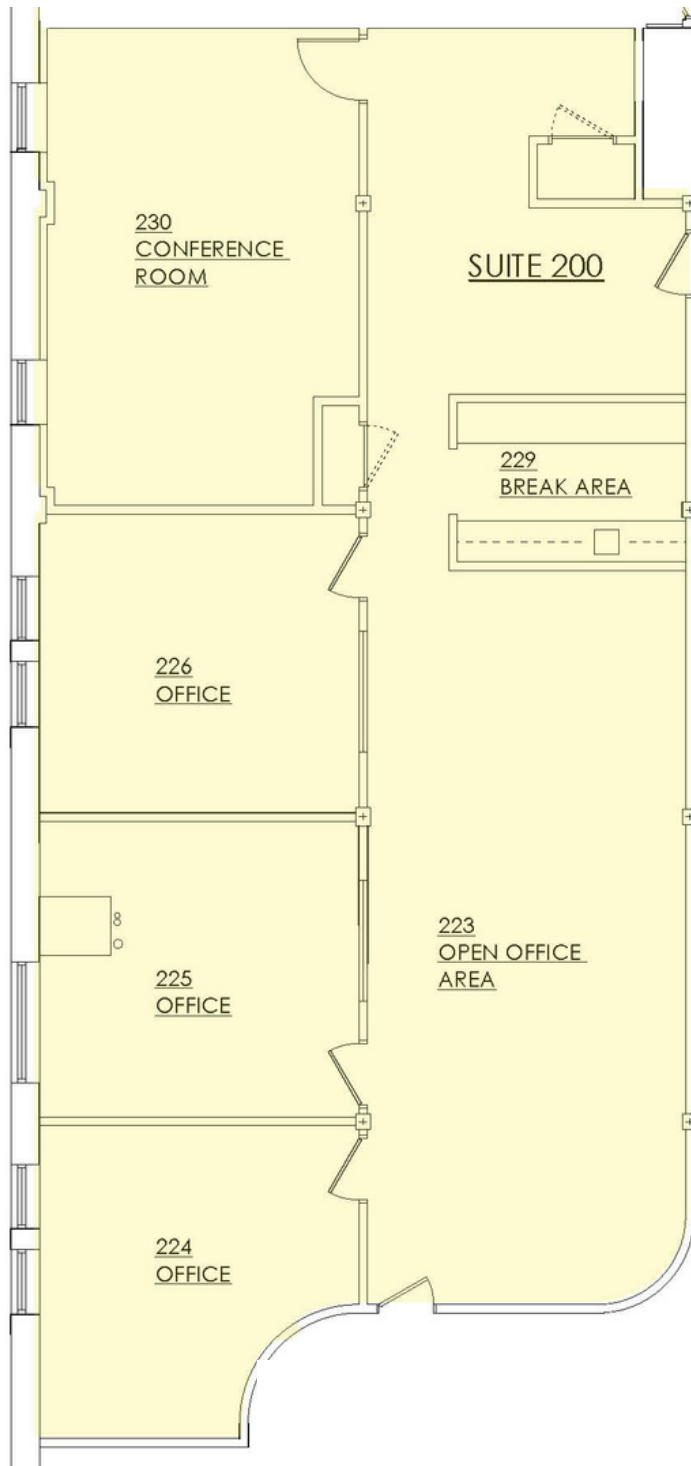
JUDY@DELTA-PROPERTIES.COM

WWW.DELTA-PROPERTIES.COM



# SUITE 200

634 W MAIN STREET MADISON, WI 53703



## EXISTING FLOOR PLAN



(608)251-3337  
JUDY@DELTA-PROPERTIES.COM  
WWW.DELTA-PROPERTIES.COM

