

# SUITE 200

612 W MAIN ST. MADISON, WI 53703



## PROPERTY FEATURES

**SIZE: 4,446 SQFT**

**TYPE: OFFICE SPACE**

**AVAILABLE: NOW**

- RENOVATED HISTORIC WAREHOUSE
- 15 PRIVATE OFFICES
- 1 LARGE CONFERENCE ROOM
- RECEPTION AREA
- IMMEDIATE SOUTHWEST BIKE PATH ACCESS
- AMPLE SURFACE PARKING
- ON SITE MANAGEMENT WITH 32+ YEARS' EXPERIENCE
- ENERGY EFFICIENT LIGHTING
- HIGH EFFICIENCY HVAC & MERV13 AIR FILTERS
- SHOWER FACILITIES
- INTERIOR BIKE PARKING
- ADA ACCESSIBLE
- OPERABLE WINDOWS



JUDY: (608)279-8882  
ANDY: (608)279-8883



JUDY: JUDY@DELTA-PROPERTIES.COM  
ANDY: ANDY@DELTA-PROPERTIES.COM

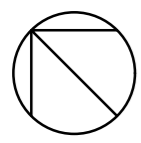


WWW.DELTA-PROPERTIES.COM

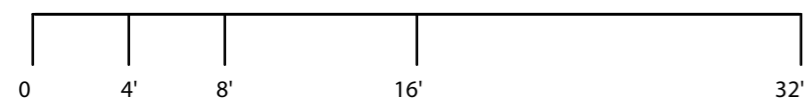


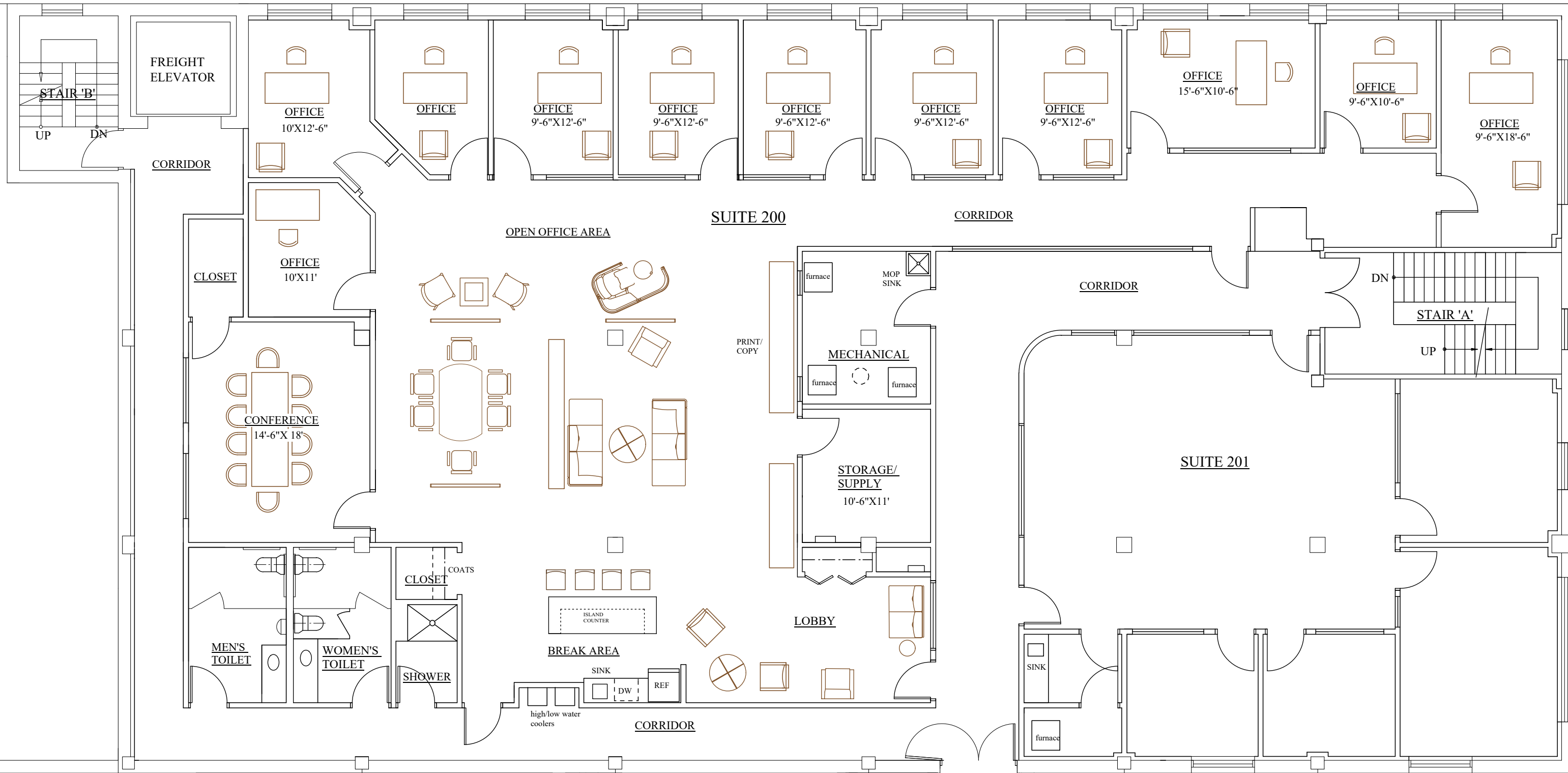
# 612 W MAIN ST - SUITE 200

## EXISTING FLOOR PLAN

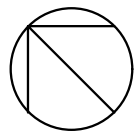


NORTH

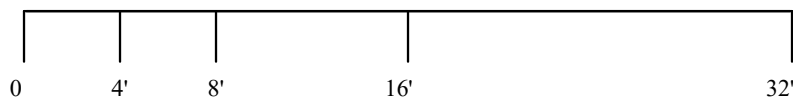


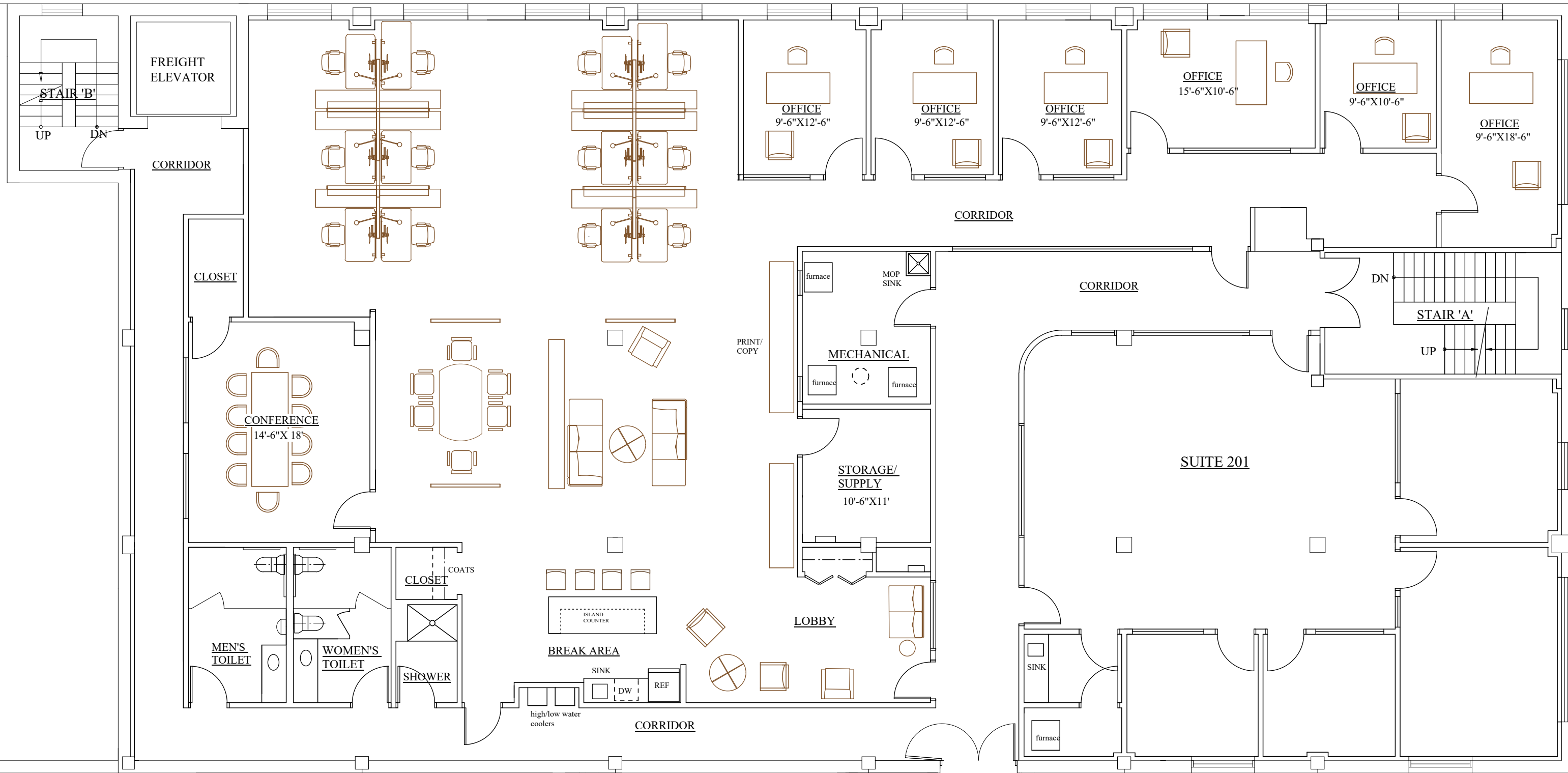


**612 W MAIN ST - SUITE 200**  
**CONCEPTUAL FLOOR PLAN 1**

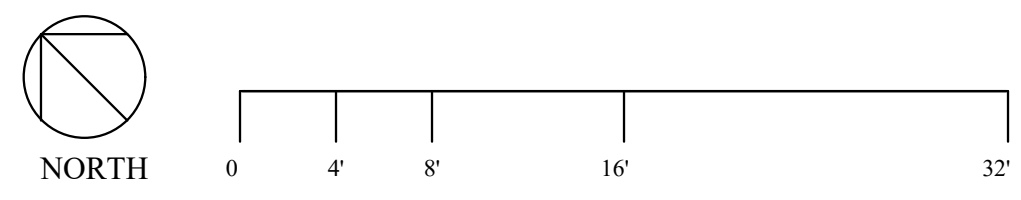


NORTH





**612 W MAIN ST - SUITE 200**  
**CONCEPTUAL FLOOR PLAN 2**





*612 W. Main Street, Suite 200  
Concept Rendering*