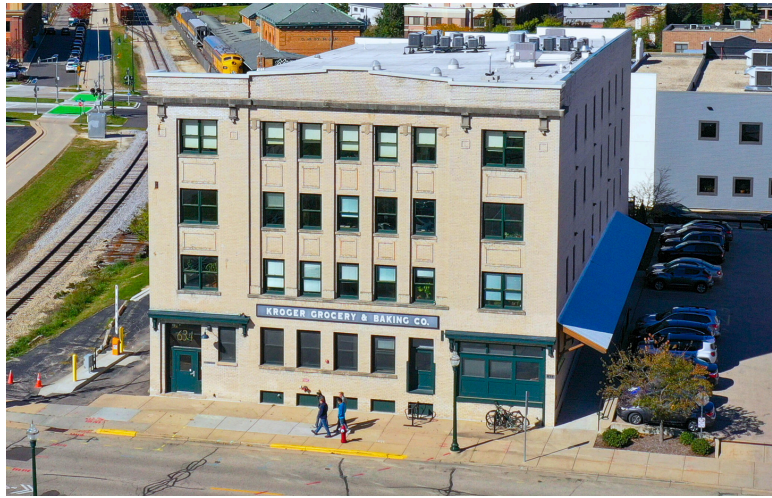


SUITE 100

634 W MAIN ST MADISON, WI 53703



- AVAILABLE: NOW**
SIZE: 3,539 SF
- 7 PRIVATE OFFICES/MEETING ROOMS
 - OPEN WORK AREA, RECEPTION & KITCHEN
 - EXPOSED BRICK, WOOD BEAMS & ABUNDANT NATURAL LIGHTING
 - OPERABLE WINDOWS
 - OUTDOOR PATIO
 - ENERGY EFFICIENT LIGHT FIXTURES
 - HIGH EFFICIENCY HVAC & MERV13 AIR FILTERS
 - SHOWER FACILITIES
 - ADA ACCESSIBLE
 - AMPLE SURFACE PARKING
 - IMMEDIATE BIKE PATH ACCESS
 - CLOSE PROXIMITY TO CAPITOL SQUARE AND KOHL CENTER
 - ONSITE MANAGEMENT



(608)251-3337

JUDY@DELTA-PROPERTIES.COM

WWW.DELTA-PROPERTIES.COM

SCAN TO VIEW



OUR WEBSITE

